



User Guide Project Manager



The information contained in this document is subject to change without notice.

BEST DESKTOP SOLUTIONS B.V. MAKES NO WARRANTY OF ANY KIND WITH REGARD TO THIS MATERIAL, INCLUDING, BUT NOT LIMITED TO, THE IMPLIED WARRANTIES OF MERCHANTABILITY AND FITNESS FOR A PARTICULAR PURPOSE. Best Desktop Solutions b.v. shall not be liable for errors contained herein or for incidental or consequential damages in connection with the furnishing, performance or use of this material.

Best Desktop Solutions b.v. assumes no responsibility for the use or reliability of its software on equipment that is not furnished by Best Desktop Solutions b.v..

This document contains proprietary information which is protected by copyright. All rights are reserved. No part of this document may be photocopied, reproduced or translated to another language without the prior written consent of Best Desktop Solutions b.v..

© 2010 by BEST DESKTOP SOLUTIONS B.V.



Index

Index.....	3
Starting Project Manager.....	4
Highlights.....	5
Overview main view.....	6
In depth main view.....	7



Starting Project Manager

Welcome to Project Manager.

This document will guide you through the Project Manager, familiarising you with its look and feel. Screenshots will be used in abundance, as Project Manager is developed to be as self-explanatory as possible. No action within Project Manager is that complicated that it needs an extensive help file. Project Manager is an add-on for SparkleFlow and a tool for packaging management. In this document we therefore will not elaborate on the basic concepts of packaging and packaging management.

Project Manager can be started in two ways: either separately by clicking the shortcut or the ProjectManager.exe file, or by clicking the Project Manager icon in ShowReport.



When starting Project Manager separate from SparkleFlow, the application will be fully functional with the exception of PackageSelect functionality (with which you can switch active packages in SparkleFlow). All a manager needs is a link to the ProjectManager.exe and access to the PackageShare directory where all application data is stored. One easy-to-use lightweight software solution for all your management information and reports!



Highlights

With project manager you have purchased a very powerful project management tool that provides you with global and detailed project information in an easy to use GANT chart.

Project manager will automatically create a GANT chart of your project progress based on the packages you selected in ShowReport, it's as easy as that. Using visual feedback makes it's easy to distinguish between what's on schedule and what's not.

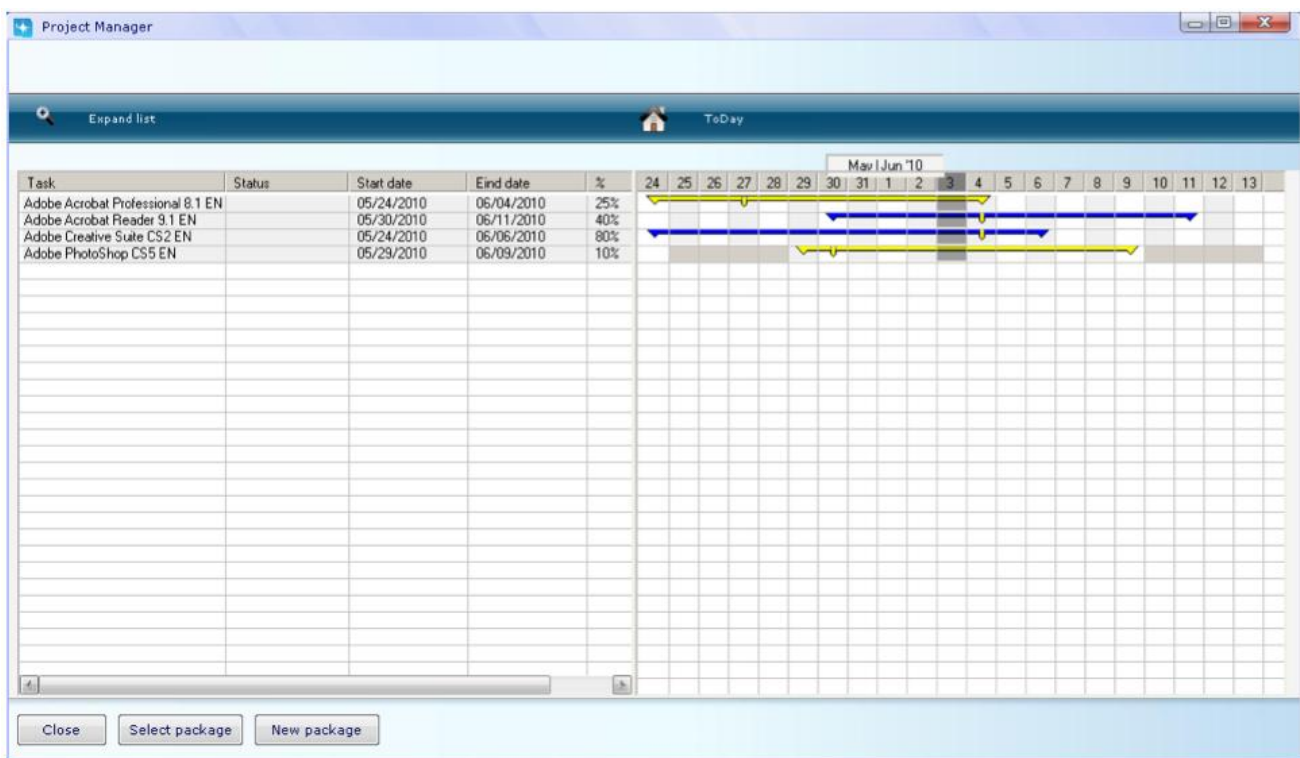
You can change the deadlines of any application package or switch between global or detailed GANT chart with the press of a button; project management has never been this easy!

The Project Manager provides you with an instant GANT chart for your weekly management reports or to use in one of your important boardroom presentations.

Overview main view

The Project Manager uses the same look and feel as SparkleFlow and is just as easy to use.

In the main view we can see all the selected application packages, including start and end date, progress (%) and of course the GANTT chart. This selection is based on the filter you used in ShowReport, in this example “Adobe”.



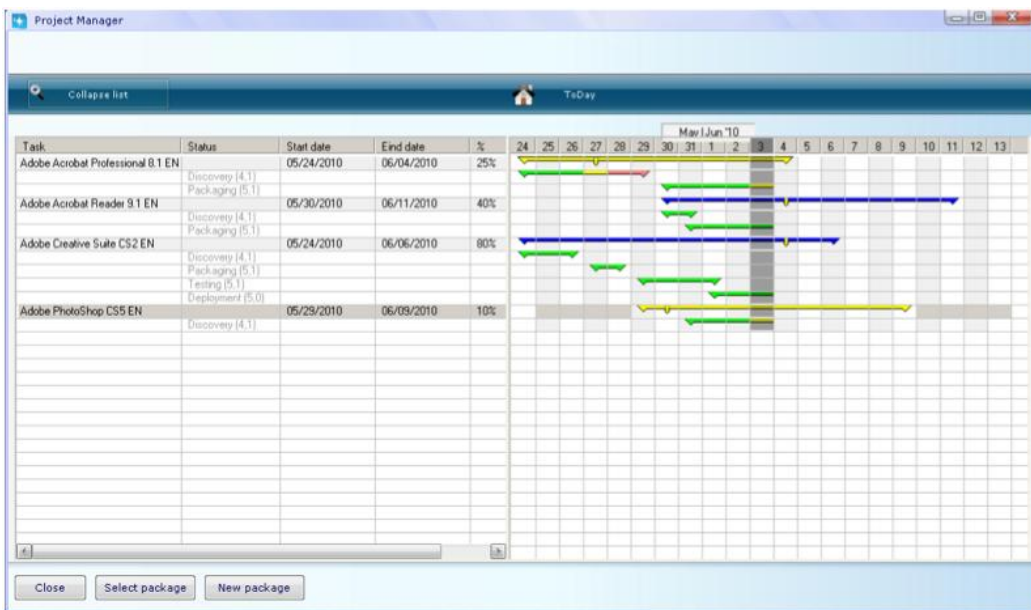
The Project Manager uses, just like ShowReport, visual feedback so that you can instantly see which tasks are on schedule (blue) and which need extra attention (yellow). The yellow indent is used to show the current percentage (%) of the progress.

In depth main view

The Expand list and ToDay button are located at the top of the Project Manager and give easy access to two great features.



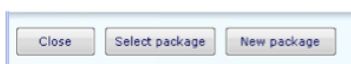
The Expand list button is used to give a detailed GANT-chart of every sub phase and it's progress.



In green are shown the parts of the bars that are within the sub phase boundaries. Yellow shows the parts of the bar that are past de sub phase boundaries, but still within the margins. And lastly in red are shown the parts of the bars that are past both the sub phase boundaries and margins.



The ToDay button let's you go back to the current date, without having to scroll back manually.



The bottom row button's is used for common tasks that are also accessible from the SelectPackag dialog. Select package opens the currently selected package within SparkleFlow. To directly create a new package press the New package button.