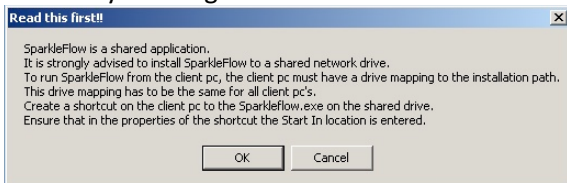




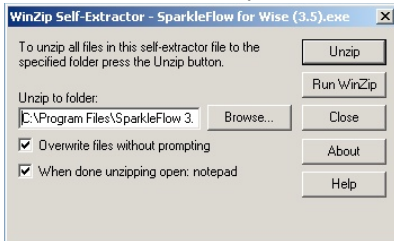
## Installing SparkleFlow

SparkleFlow is distributed as a self-extracting zipfile. We advise to install SparkleFlow to a shared network drive so that multiple users can access and use it.

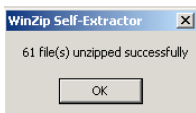
To install the application, run the installation program and follow the on screen instructions. The first window you will get is the “Read this first” message. Click OK after reading the message.



Choose your download location, for example C:\Program Files\SparkleFlow 3.5 for local installation or X:\Applications\SparkleFlow 3.5 for a shared application. Of course you can use any other drive letter or network location of your choosing.



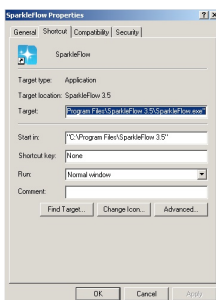
Press OK after the installation.



At the end of the installation, The End User License Agreement will be displayed.

To activate your purchase of SparkleFlow, copy the SparkleFlow.ini and SparkleFlow.lic file, that you have received by e-mail to the SparkleFlow installation folder.

Create a shortcut to the SparkleFlow.exe on every client that uses SparkleFlow, in our example C:\Program Files\SparkleFlow 3.5\SparkleFlow.exe or X:\Applications\SparkleFlow 3.5\SparkleFlow.exe



Note: Always use a (network) drive letter to run SparkleFlow, this because the batch files used by SparkleFlow can only handle a drive letter to run package installations.